



### WONGA WALK LOOKOUT - DORRIGO NATIONAL PARK

**Date of Project:** 6 September 2021

**Client:** Enprocon (Qld) Pty Ltd

**Owner:** New South Wales Parks & Wildlife

**Location:**

Waterfall Way,  
Dorrigo NSW

**Industry Sectors:**

- Residential & Commercial Buildings
- Subdivisions & Municipal Works
- Manufacturing & Processing
- Infrastructure & Facilities

**Service Type:**

- Civil Engineering
- Structural Engineering
- Hydraulic Engineering
- Forensic Engineering
- Project Management
- Project Appraisal
- Construction Audit

**Documents:**

- Drawings
- Reports
- Certificates
- Audio Visual
- Maps
- Models



The Wonga walk delivers all the delights of the subtropical rainforest in Dorrigo National Park. Tall, lush World Heritage listed rainforest provides a cool and shaded walking track and many waterfalls. The 600-year-old trees, elevated boardwalk, colourful fungi, vines, and interesting bird calls are just some of the sights and sounds on this walk. FTS undertook the role of construction auditor for the works on behalf of NSW Parks & Wildlife service with Enprocon.



NSW—Office  
12 Caribbean Street  
MOUNT COLAH NSW 2079

QLD—Office  
90 Jean Street  
WOODRIDGE QLD 4114

Phone: 0431 007 313

E-mail: [info@fairdinkumtechnicalservices.com.au](mailto:info@fairdinkumtechnicalservices.com.au)

For Further Information Please Contact Us



We're **FAIRDINKUM** about Service

Ref: 22171







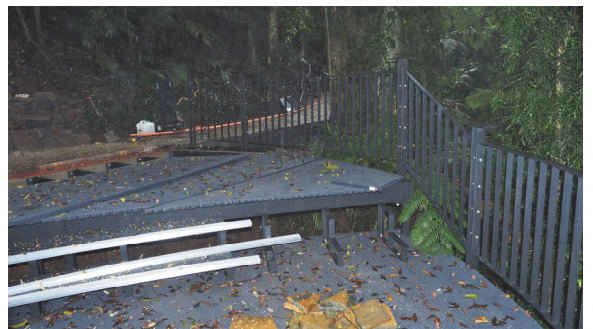
### WONGA WALK LOOKOUT - DORRIGO NATIONAL PARK

**Date of Project:** 6 September 2021

**Client:** Enprocon (Qld) Pty Ltd

**Owner:** New South Wales Parks & Wildlife

**Location:**  
Waterfall Way,  
Dorrigo NSW



NSW—Office  
12 Caribbean Street  
MOUNT COLAH NSW 2079

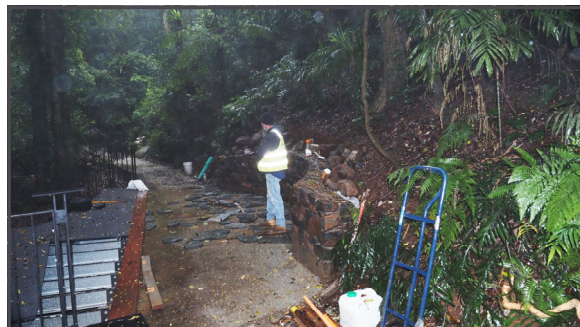
QLD—Office  
90 Jean Street  
WOODRIDGE QLD 4114

Phone: 0431 007 313

E-mail: [info@fairdinkumtechnicalservices.com.au](mailto:info@fairdinkumtechnicalservices.com.au)

For Further Information Please Contact Us

Site inspection during pouring rain enabled stability of under slope to be assessed.



We're **FAIRDINKUM** about Service

Ref: 22171

