



### FLOOR LOAD - AUSTRALIAN SCIENTIFIC ENTERPRISES

**Date of Project:** 30 October 2021

**Client:** Australian Scientific Enterprises P/L **Owner:** Australian Scientific Enterprises P/L

**Location:**  
83 Hunter Street,  
Hornsby NSW

**Industry Sectors:**

- Residential & Commercial Buildings
- Subdivisions & Municipal Works
- Manufacturing & Processing
- Infrastructure & Facilities

**Service Type:**

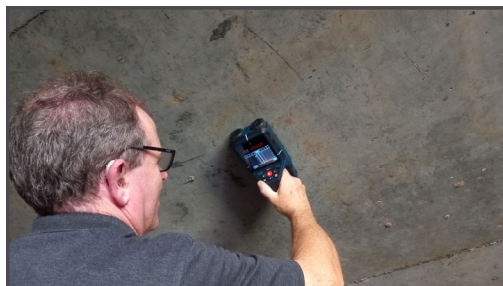
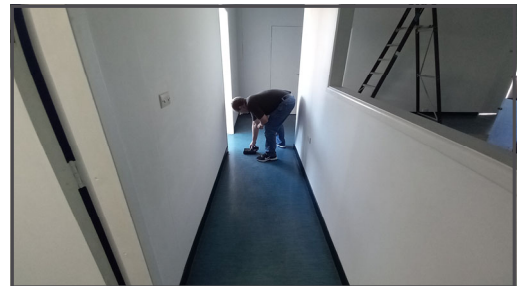
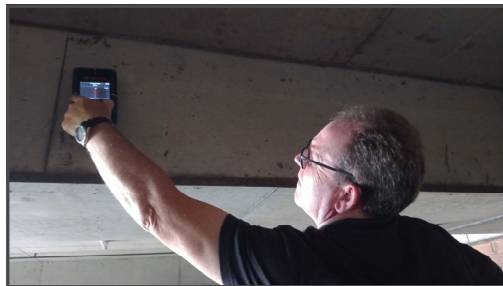
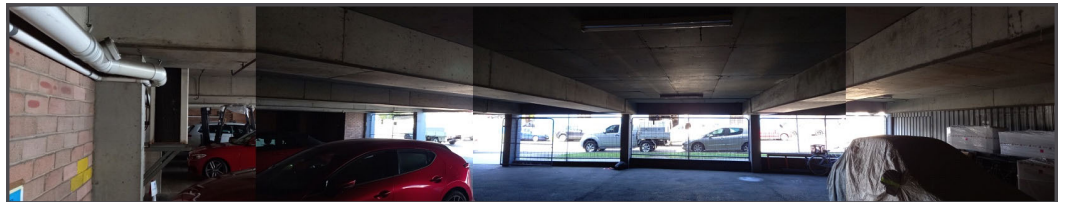
- Civil Engineering
- Structural Engineering
- Hydraulic Engineering
- Forensic Engineering
- Project Management
- Project Appraisal
- Construction Audit

**Documents:**

- Drawings
- Reports
- Certificates
- Audio Visual
- Maps
- Models



FTS was commissioned to assess the floor load capacity for a reinforced concrete building without as-built or design drawings being available. This was undertaken using a hand held radar device that could determine bar size, depth and alignment. to survey the reinforcement and a Schmidt Hammer to indicate concrete strength.. ASE were installing a new 3T freeze drier on the first floor.



NSW—Office  
12 Caribbean Street  
MOUNT COLAH NSW 2079

QLD—Office  
90 Jean Street  
WOODRIDGE QLD 4114

Phone: 0431 007 313

E-mail: [info@fairdinkumtechnicalservices.com.au](mailto:info@fairdinkumtechnicalservices.com.au)

For Further Information Please Contact Us



We're **FAIRDINKUM** about Service

Ref: 221204

